

AGENDA SUPPLEMENT (1)

Meeting: Salisbury Area Board

Place: The Guildhall, Market Place, Salisbury, Wiltshire, SP1 1JH

Date: Wednesday 10 November 2021

Time: 6.00 pm

The Agenda for the above meeting was published on 2 November 2021. Additional documents are now available and are attached to this Agenda Supplement.

Please direct any enquiries on this Agenda to Lisa Alexander, of Democratic Services, County Hall, Bythesea Road, Trowbridge, direct line 01722 434560 or email lisa.alexander@wiltshire.gov.uk

Press enquiries to Communications on direct lines (01225)713114/713115.

This Agenda and all the documents referred to within it are available on the Council's website at www.wiltshire.gov.uk

7 **Partner and Community Updates** *(Pages 3 - 16)*

9 **Underpass Working Group - Map** *(Pages 17 - 18)*

DATE OF PUBLICATION: 8 November 2021

This page is intentionally left blank

Salisbury CPT Area Board Update



Page 3

Agenda Item 7

October 2021



Your CPT - Salisbury

Inspector: Tina Osborn

Neighbourhood Sergeant: Sgt Chris Noke / Sgt Lisa Lovatt

Central – which covers City Centre, The Friary & Southampton Road

PC Nicola Clark

PCSO Amelia Hudson

PSCO Rupinder Kaur

PCSO Marie Kitt

West – which covers Bemerton Heath, St Paul's & Churchfields

PC Caroline Ralph

PCSO Val Brown

PCSO Jo Atkinson

East – which covers Castle Road, Bishopdown, Alderbury, Laverstock & Old Sarum

PC Rachel Gunn/ PC Pete Jung

PCSO Jenny Moss

PCSO John Taylor

PCSO Geanina-Mariana Tablet

South – which covers Harnham, Wilton (Town and Rural), Downton & Redlynch

PC Mark Douglas

PCSO Jonathan Rose

PCSO Simon Ward

PCSO Matt Murray

WILTSHIRE POLICE

Proud to serve and **protect** our communities



@wiltshirepolice

Performance – 12 months to September 2021

Force

- Wiltshire Police has had a decrease in the volume of recorded crime by 6.0% in the 12 months to September 2021 and continues to have one of the lowest crime rates in the country.
- Wiltshire Police has seen a 17% reduction in vehicle crime and a reduction of 25% in residential burglaries in the 12 months to September 2021.
- Our service delivery remains consistently good.
- In August 2021, we received:
 - 9,895 '999' calls, (answered within 12 seconds on average);
 - 11,341 '101' calls, (answered within 15 seconds on average);
 - 12,307 'CRIB' calls, (answered within 3 minute 10 seconds on average).
- In September 2021, we also attended 1,717 emergency incidents within 10 minutes and 21 seconds on average.

Page 5

Crime Type	Crime Volume	% of Crime
Totals	38,224	100.0
Violence without injury	6,650	17.4
Violence with injury	5,508	14.4
Criminal damage	4,889	12.8
Stalking and harassment	3,926	10.2
Public order offences	3,547	9.3
Other crime type	13,704	35.8

Salisbury CPT

Crime Type	Crime Volume	% of Crime
Totals	4,529	100.0
Violence without injury	708	15.6
Criminal damage	626	13.8
Violence with injury	602	13.3
Public order offences	451	10.0
Stalking and harassment	400	8.8
Other crime type	1,742	38.5

Stop and Search information for Salisbury CPT

During the 12 months leading to August 2021, 209 stop and searches were conducted in the Salisbury area of which 75.1% related to a search for controlled drugs.

During 67.9% of these searches, no object was found. In 23.6% of cases, an object was found. Of these cases 73.2% resulted in a no further action disposal; 26.3% resulted in police action being taken; 9.6% resulted in an arrest.

Of the stop and search subjects who defined their ethnicity:

- White – 171 stop and searches.
- Black or Black British – 10 stop and searches
- Asian or Asian British – 7 stop and searches
- Mixed Ethnicity – 2 stop and search
- Chinese or other ethnic group – 1 stop and search

Local Priorities & Updates

Priority	Update
Non-dwelling burglaries	Non-dwelling burglaries remain a priority especially across our rural communities and border areas with other forces. The team have continued to carry out high visibility patrols in known targeted areas and are working closely with neighbouring forces to identify and target possible offenders as well as investigating individual offences where lines of enquiry exist and offering security advice to victims.
Rural Crime	Rural crime continues to be a focus for the team with increased reports of poaching / hare coursing over the past weeks as is expected at this time of year. We are continuing to conduct proactive operations with our neighbouring forces and our Rural Crime Team in tackling rural crime and have carried out two focused Rural Ops throughout October.
Street homeless and ASB	With the winter months coming we have historically seen the street homeless migrate to under the Maltings car park in the City Centre. This has been associated with a rise in ASB in the area and we are carrying out increased patrols in this location as well as keeping in close communication with City Centre Security and Wiltshire Council to ensure there is a shared understanding of any issues and how they can be addressed.
ASB involving catapults	We have continued to see a small amount of ASB around the use of catapults in the rural areas which has been linked with rural crime and minor criminal damage. Increased patrols in these locations are a priority and proactive Rural Crime Operations and close work with our neighbouring police forces continue as the best way to deter and catch offenders.
ASB	We are still receiving a small number of reports of ASB in the New Skate Park in Old Sarum and also the new play park at Mannock Field, Longhedge. Additional patrols are continuing and our PCSOs are engaging with the local communities and visiting schools across the Salisbury area, to educate students regarding reported ASB and the impact such behaviour may have on others within the community.

Local Priorities & Updates Continued

Priority	Update
Closure Orders & protecting vulnerable persons	We are continuing to work in partnership with Wiltshire Council to identify properties responsible for localised ASB and secure Closure Orders for these properties. As well as monitoring and enforcing existing Closure orders we have identified a small number of additional problem properties and have begun to work with the Council to gather the evidence required to progress to Closure where appropriate. Closure Orders are powerful tools that we can use to address ASB originating from an address or location and are particularly useful in dealing with ASB associated to drug use and drug dealing.
Page 7	



Useful links

For more information on Wiltshire Police's performance please visit:

- PCC's Website - <https://www.wiltshire-pcc.gov.uk/>
- HMICFRS Website - <https://www.justiceinspectorates.gov.uk/hmicfrs/police-forces/wiltshire/>
- Police.uk - <https://www.police.uk/pu/your-area/wiltshire-police/>
- For information on what crimes and incidents have been reported in the Salisbury Community Policing Team area, visit <https://www.police.uk/pu/your-area/wiltshire-police/salisbury/> to view a crime and incident map and find links to more detailed data

Get Involved

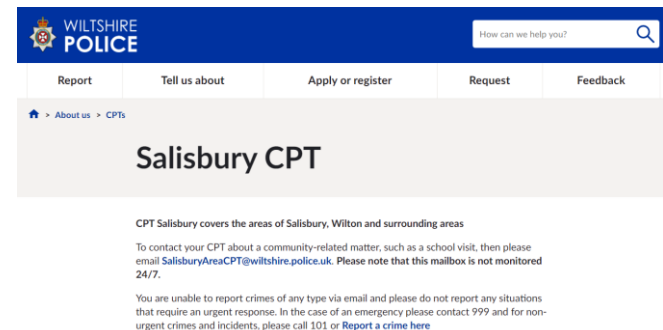
Keep up to date with the latest news and alerts in your area by signing up to our **Community Messaging service** – www.wiltsmessaging.co.uk



Follow your CPT on social media

- [Salisbury Police Facebook](#)
- [Salisbury Police Twitter](#)

Find out more information on your CPT area at: www.wiltshire.police.uk and here www.wiltshire-pcc.gov.uk



This page is intentionally left blank



DORSET & WILTSHIRE FIRE & RESCUE SERVICE

WILTSHIRE AREA BOARD REPORT NOVEMBER '21

Community Safety Plan

DWFRS Community Safety Plan can be found on the DWFRS website;
<http://www.dwfire.org.uk/community-safety-plan/>

Prevention

We are committed to making a real difference to the lives of people in Dorset and Wiltshire. Our aim is to reduce the level of risk and harm to our communities from fire, targeting those most at risk. We do this primarily through our Safe and Well visits.

A Safe and Well visit is **FREE** and normally lasts about one hour covering topics such as:

- Using electricity safely
- Cooking safely
- Making an escape plan
- What to do if there is a fire
- Keeping children safe
- Good practice – night time routine and other points relevant to you
- Identifying and discussing any further support the occupier may need

Are you or anyone you know:-

- Over the age of 65?
- Need a smoke detector?
- Have a long-term health condition?
- Suffer from poor hearing or sight loss?
- Would you struggle to escape in the event of a fire?

If you can answer yes to more than one of these questions, then please call us on 0800 038 2323 or visit <https://www.dwfire.org.uk/safety/safe-and-well-visits/>



Protection

On-going interaction by Protection Team members with Local Authorities, Private landlords and tenants regarding fire safety-related matters: external cladding systems; fire detection and warning systems; fire resisting doors (& self-closers); combustibility/fire resistance of construction materials; commercial and residential sprinklers systems and water-mist suppression systems

General Enquiries

If you have a general fire safety enquiry regarding commercial property, please email fire.safety@dwfire.org.uk and the Fire Safety Team will respond in office hours.

Fire Safety Complaint

If you wish to tell us about fire safety risks in commercial premises, such as locked or blocked fire exits, you have three options:

- You can email the fire safety department at enforcement@dwfire.org.uk
- Call 01722 69 1717 during office hours (9am-5pm).
- Call our Service Control Centre on 0306 799 0019 out of office hours (5pm-9am)

On Call Recruitment

Have you always wondered if you could join the fire service, but haven't had the opportunity to find out more? Have you found yourself seeking your next challenge, keen to give back to the local community or wanting to learn new skills including leadership and teamwork? Then becoming an on-call firefighter is for you.

As a paid position, on-call firefighters commit anywhere between 40 to 120 hours per week, during which time they must be able to respond to the station immediately.

Many have 'normal' jobs during the day, then upon their return home make themselves available overnight or during the weekends. Some of our crew respond from their workplaces during the day, and we are very grateful to their employers for releasing them to perform their vital duties.

Anyone over 18 years old can apply (although you can also apply once you are 17½) you must be able to respond and attend the fire station within 5-8 minutes, you have a good standard of physical fitness (i.e. you are generally active), and you must have the right to work in the UK.

Further information on becoming an On Call Firefighter can be found at www.dwfire.org.uk/working-for-us/on-call-firefighters/ or should you have any questions, you can call **01722 691444**.

Recent News & Events

Firefighters save house in Melksham amid plea for new recruits

Assistant Chief Fire Officer Andy Cole said: “Firefighters did a great job of saving the house involved in this incident. This fire occurred about 150m from Melksham Fire Station but unfortunately, due to lack of available firefighters, Melksham was not available to attend.

He added: “We have and continue to try to recruit on-call firefighters across Dorset and Wiltshire, this type of incident shows exactly why we need these new recruits. Whilst we will always make sure a fire engine responds to an incident when it is needed, in this case it took firefighters from Trowbridge 11 minutes from the call to arrive, if Melksham had been available, this response time could have been cut dramatically.”

On-call firefighters are **paid members of staff** who respond to their local station when they are required to attend incidents and help their local community. They receive the same levels of training and support as their full time colleagues. We are particularly interested in hearing from females or those from underrepresented groups. If you are interested in becoming an on-call firefighter, please find out more on our website <https://www.dwfire.org.uk/working-for-us/on-call-firefighters/>

First SPECTRA course held

Previously known as Salamander in the North and SPARC in the South, our personal development courses are now being delivered under the banner of SPECTRA.

The first course was held in Swindon and culminated with a passout parade on 6 October where Deputy Lieutenants of Wiltshire, Shirley Ludford and Claire Garret, and the High Sheriff of Wiltshire, Sir Charles Hobhouse Bt, helped to celebrate the learners' achievements.

SPECTRA courses can be delivered for young people and adults, and can be tailored to meet a certain cohort or commissioner's needs. For more information, please visit www.dwfire.org.uk/SPECTRA

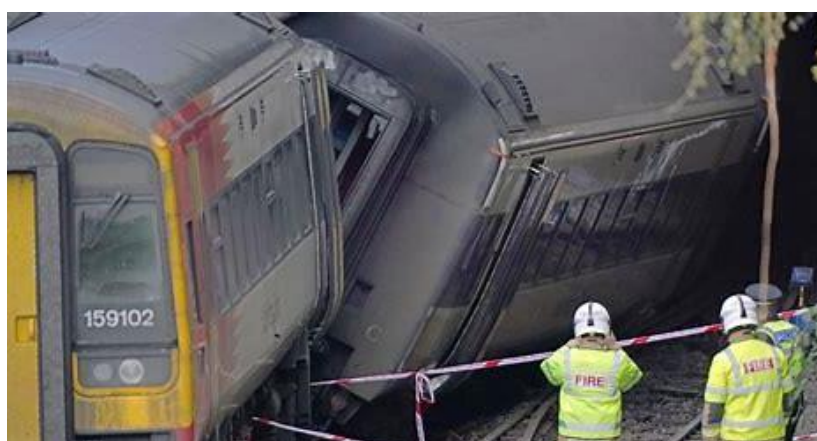


Salisbury Train Crash

All three of our local stations (Salisbury, Wilton & Amesbury) attended the recent train crash at Fisherton Tunnel on Sunday 31st October carrying out the rescue of the trapped train driver and assisting all other passengers to safety. An approximate number of 100 passengers were on the train, some of whom sustained injuries in the collision which thankfully were deemed minor by the medical services on scene.

An emergency call was received by our control room to a report of a train derailment with the first appliances being mobilised at 18:58 and on scene by 19:05. An attendance by the Fire Service of 7 fire engines, 2 heavy rescue units, a command unit and several specialist officers attended the scene. Our presence remained until 23:43 and following confirmation that there were no further rescues or hazards remaining, we handed over the incident to Wiltshire Police, British Transport Police and the Rail Investigation and Accident Branch for further investigations into the cause of the accident.

All emergency services worked extremely well together to achieve a common goal of rescuing any casualties and survivors as well as making the scene safe and we would like to thank the public for their support to the passengers and emergency services during this incident.



Demand

Total Fire Calls for Salisbury Fire Station for period:- 4th September to 2nd November 21

Category	Total Incidents
No. of False Alarms	73
No. of Primary Fires – House, car, building etc	21
No. of Secondary Fires – bins, bonfire, fence, waste etc	15
No. of Road Traffic Collisions and other Emergencies	69
Total	178



Total Fire Calls for Amesbury Fire Station for period:- 4th September to 2nd November 21

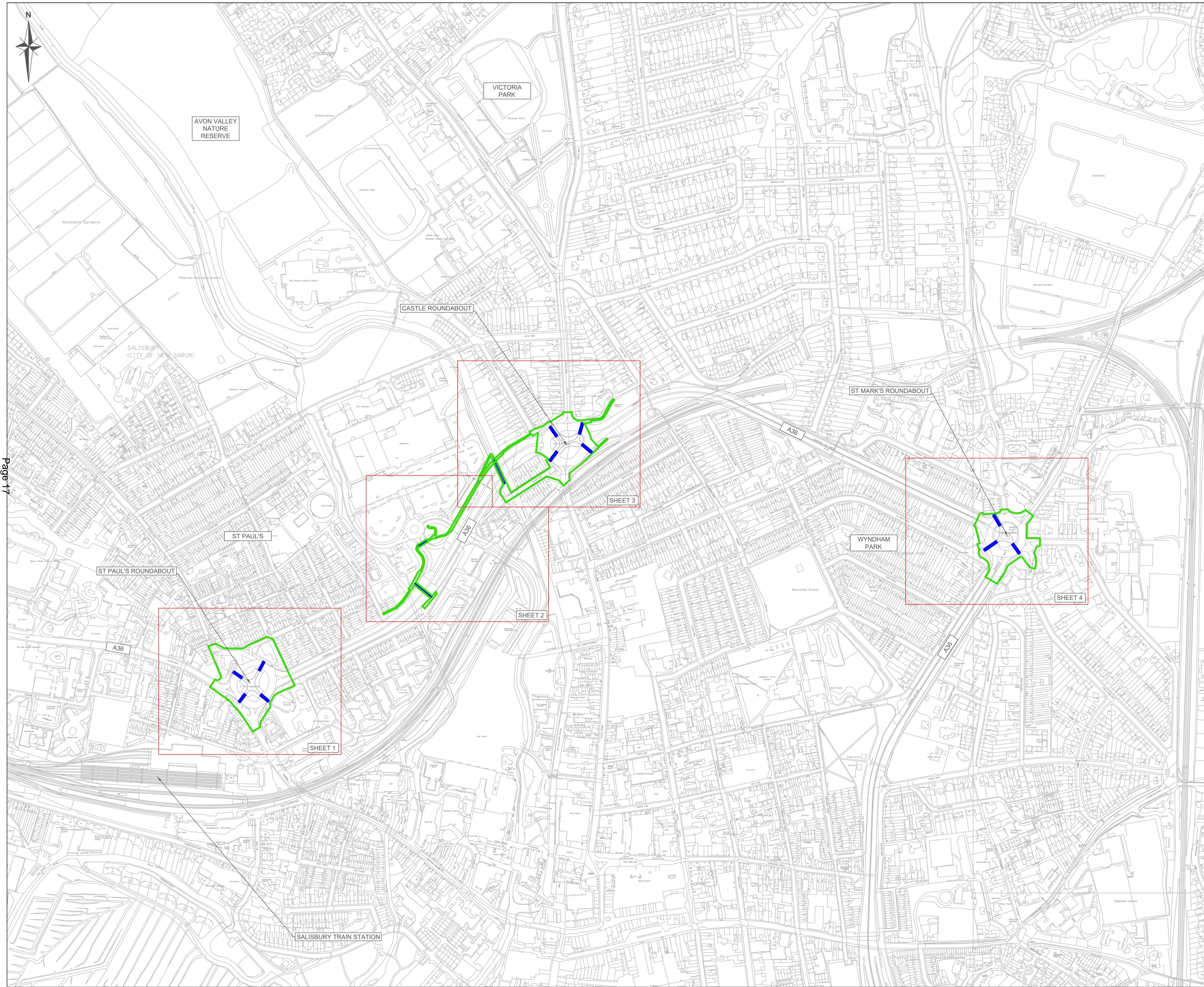
Category	Total Incidents
No. of False Alarms	7
No. of Primary Fires – House, car, building etc	6
No. of Secondary Fires – bins, bonfire, fence, waste etc	0
No. of Road Traffic Collisions and other Emergencies	5
Total	18

Total Fire Calls for Wilton Fire Station for period:- 4th September to 2nd November 21

Category	Total Incidents
No. of False Alarms	7
No. of Primary Fires – House, car, building etc	2
No. of Secondary Fires – bins, bonfire, fence, waste etc	0
No. of Road Traffic Collisions and other Emergencies	13
Total	22

Matty Maggs
Station Manager – South East Wiltshire
Email: Matthew.maggs@dwfire.org.uk
Tel: 01722 691193
Mobile: 07595 966708

This page is intentionally left blank



Page 17

Notes:

1. THIS DRAWING IS NOT TO BE SCALED.
2. ALL DIMENSIONS ARE IN METERS UNLESS OTHERWISE SPECIFIED.

Key:

- INDICATIVE STUDY BOUNDARY
- SUBWAY
- SHEET OUTLINE

LIST OF SUBWAYS	
SHEET	SUBWAY
1	YORK ROAD SUBWAY
1	CHURCH SUBWAY
1	WILTON ROAD SUBWAY
1	DEVIZES ROAD SUBWAY
2	SCAMMELS ROAD SUBWAY
2	CATTLE MARKET SUBWAY
3	AVON SUBWAY
3	HULSE ROAD SUBWAY
3	CASTLE ROAD SUBWAY
3	CASTLE STREET SUBWAY
3	NELSON ROAD SUBWAY
4	ST MARK'S AVENUE SUBWAY
4	BOURNE AVENUE SUBWAY
4	ST MARK'S ROAD SUBWAY

Rev	By	JCM	JCM	17/09/21	17/09/21	First Issue
						Description
A	JC	JCM	JCM	17/09/21	17/09/21	First Issue

Area SW
 Ash House
 Falcon Road,
 Sowton,
 Exeter,
 EX2 7LB
 Tel : +44 (0)300 470 1811
 Email : southwestenquiries@highwaysengland.co.uk
 Web : www.highwaysengland.co.uk



FOR INFORMATION

Project
A36 SALISBURY RBT SUBWAYS IMPORVEMENTS

Drawing
SCHEME LOCATION PLAN - OVERVIEW

Project Ref
605387

Drawn	: JC	Date:	16/09/21
Designed	: JC	Date:	16/09/21
Checked	: JCM	Date:	17/09/21
Approved	: JCM	Date:	17/09/21
Drawing Scale:	1:500	Sheet Size	A1

Drawing No.	Revision
605387_SAL_SUBWAY_IMPS_LOCATION_OVERVIEW	A

This page is intentionally left blank